

# Design S9012 / Pullover with Seed Stitch Corners



**Sizes:** XS (S, M, L, XL)

Instructions are for smallest size with the larger sizes in parentheses. If there is only one number, it applies to all sizes.

## Materials:

**Schachenmayr Catania**, 500 (550, 550, 650, 650) g dark olive #00387,  
 1 Milward circular needle US 3 (3 mm), each 16 and 24"/40 and 60 cm long,  
 Blunt yarn needle.

## Border Pattern:

**Row 1 (WS):** \*Purl 2, knit 2; rep from \*, end purl 2.

**Row 2 (WS):** K the knit stitches and p the purl stitches.

**Repeat Row 2.**

**Stockinette Stitch (St st):** Knit on RS rows, purl on WS rows.

**Side Seed Stitch Panels:** Follow Chart 1 (left and right). Work the 21 sts as shown on left and right chart once. Work rows 1 - 26 once, then repeat rows 3 - 26 three times.

**Seed Stitch Triangle:** Follow Chart 2. Work the 15 sts as shown once. Work rows 1 - 16 once.

**Gauge:** 25 stitches and 32 rows = 4 x 4"/10 x 10 cm, in Seed Stitch.

## INSTRUCTIONS

**Back: Cast on** 118 (126, 138, 146, 158) stitches and work in Border Pattern for 1½"/4 cm = 13 Rows. Continue in St st, and on the 1st (RS) row, increase 1 (3, 1, 3, 1) sts = 119 (129, 139, 149, 159) stitches. Purl 1 row. Work the curved edge as follows:

**Next row (RS):** Knit 30 and place stitches on a holder, knit 59 (69, 79, 89, 99), place remaining 30 stitches on a 2nd holder.

Purl 1 row over these center stitches.

**Next row:** Knit 63 (73, 83, 93, 103), turn.

**Next row:** Purl 67 (77, 87, 97, 107), turn.

Continue in this way to add 4 more stitches each side at end of every row 4 times, more, then 5 more stitches twice = all sts have been worked. Place a marker each side of last row and continue in St st over all stitches for ¾"/2 cm = 6 rows above markers.

Work side seed stitch panels as follows: 21 stitches in Chart 1 (right), continue center 77 (87, 97, 107, 117) stitches in St st and work 21 stitches in Chart 1 (left).

Continue in patterns as established until piece measures 13½"/34 cm = 108 rows above markers. Place a 2nd set of markers each side of last row for beginning of the armhole.

Continue in St st over all stitches until piece measures 21¼" (22, 22, 23, 23)"/54 (56, 56, 58, 58) cm = 174, 180, 180, 186, 186 rows above the first set of markers.

For the shoulder shaping, bind off from each shoulder edge 10 (10, 10, 10, 11) stitches at beginning of next 6 (8, 4, 6, 6) rows and 7 (0, 11, 15, 14) stitches at beginning of next 2 (0, 4, 2, 2) rows.

At the same time, for the neck shaping, bind off the center 21 (21, 21, 25, 25) stitches and working both sides at once, bind off from each neck edge 7 (8, 9, 9, 11) stitches once and 5 (6, 8, 8, 9) stitches once.

**Front:** Work same as back until 13 rows of Border Pattern have been worked. Place a marker each side of last row.

Knit next row on RS, and increase 1 (3, 1, 3, 1) sts = 119 (129, 139, 149, 159) stitches.

Purl 1 row.

Work the curved edge as follows:

# Design S9012 / Pullover with Seed Stitch Corners

**Next row (RS):** Knit 5, turn.

**Next row (WS):** Purl to end.

**Next row:** Knit 10, turn.

**Next row (WS):** Purl to end.

**Next row:** Knit 14, turn.

**Next row (WS):** Purl to end.

Continue in this way to work 4 more stitches at end of every RS row, 4 times more = 30 stitches.

At the same time, after  $\frac{3}{4}$ "/2 cm = 6 rows above marker, begin chart 1 (right).

Work the 2nd half of curve as follows:

**Next row (RS):** Work over all stitches.

**Next row (WS):** Purl 5, turn.

**Next row:** Knit to end.

**Next row:** P 10, turn.

**Next row:** Knit to end.

Complete to correspond to first half, and working chart 1 (left). After 30 stitches have been worked on a RS row, continue in pats as established over all 119 (129, 139, 149, 159) stitches, working the side seed st panels and keeping the center stitches in St st.

**Note:** After all rows of side seed stitch panels have been worked, continue in St st over all stitches.

After  $1\frac{1}{2}$ "/34 cm = 108 rows above markers. Place a 2nd set of markers each side of last row for beginning of the armhole. Continue in St st over all stitches until piece measures 17 ( $17\frac{3}{4}$ ,  $17\frac{3}{4}$ ,  $18\frac{1}{2}$ ,  $18\frac{1}{2}$ )/43 (45, 45, 47, 47) cm = 138, 144, 144, 150, 150 rows above first markers. Work the center 15 stitches in Chart 2.

When piece measures 19 ( $19\frac{1}{2}$ ,  $19\frac{1}{2}$ ,  $20\frac{1}{2}$ ,  $20\frac{1}{2}$ )/48 (50, 50, 52, 52) cm = 154 (160, 160, 166, 166) rows above first markers, for the neck shaping, bind off center 19 (21, 23, 25, 27) stitches and working both sides at once, bind off from each neck edge 4 (4, 4, 4, 5) stitches once, 3 stitches twice, 1 (1, 2, 2, 2) stitches 2 (2, 2, 3, 3) times and decrease 1 st every 4th row 1 (2, 2, 1, 2) times.

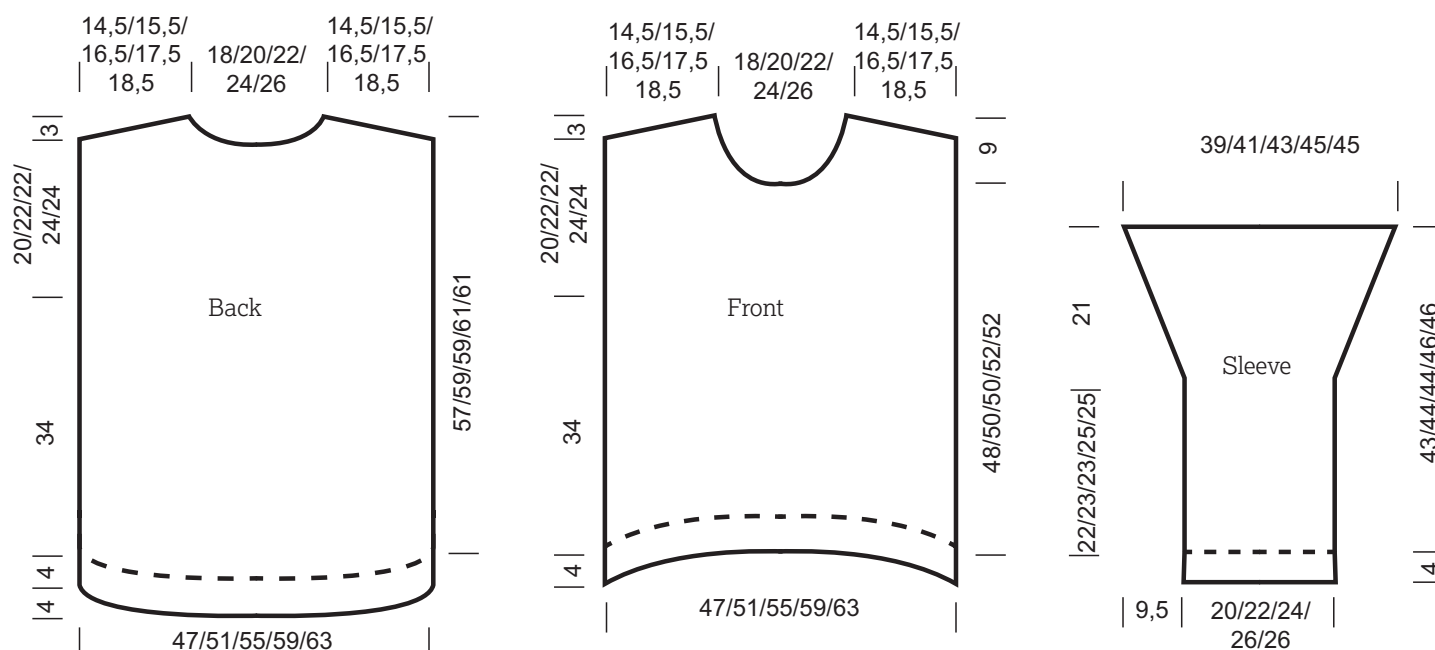
At the same time, when piece measures  $21\frac{1}{4}$  (22, 22, 23, 23)/54 (56, 56, 58, 58) cm = 174 (180, 180, 186, 186) rows above 1st markers, work shoulder shaping same as Back.

**Sleeves:** Cast on 50 (54, 62, 66, 66) stitches and work in Border Pattern for  $1\frac{1}{2}$ "/4 cm = 13 rows. Continue in St st, and on the 1st row increase 2 (3, 0, 1, 1) stitches = 52 (57, 62, 67, 67) stitches. When piece measures  $8\frac{1}{2}$  (9, 9, 10, 10)/22 (23, 23, 25, 25) cm = 68 (74, 74, 80, 80) rows above Border Pattern, for the sleeve shaping, increase 1 stitch each side (working increase at 2 stitches in from each end) every 4th row 9 times and every 2nd row 15 times = 100 (105, 110, 115, 115) stitches. Work even until piece measures 17 ( $17\frac{1}{2}$ ,  $17\frac{1}{2}$ , 18, 18)/43 (44, 44, 46, 46) cm = 138 (140, 140, 146, 146) rows above Border Pattern, bind off stitches loosely.

**Neckband:** Cast on 142 (146, 150, 154, 158) stitches and work in Border Pattern for  $1\frac{1}{2}$ "/4 cm. With a length of scrap yarn, knit 1 row on RS. This yarn will be unraveled before sewing neckband to neck edge.

**Finishing:** Sew shoulder seams. With center of bound-off edge of sleeve at shoulder seam, sew top of sleeve to front and back between armhole markers. Sew side and sleeve seams. Remove the scrap yarn from the neckband, one stitch at a time, and sew the open stitches around neck edge. Sew the short ends of neckband together.

# Design S9012 / Pullover with Seed Stitch Corners



Measurement Table for the Pullover

Sizes	XS	S	M	L	XL
<b>Back and Front</b>					
Width at lower edge (in)	18½	20	21½	23¼	25
Border height (in)	1½	1½	1½	1½	1½
Length above border to armhole (in)	13½	13½	13½	13½	13½
Armhole depth (in)	8	8½	8½	9½	9½
Neck depth Back (in)	1¼	1¼	1¼	1¼	1¼
Neck depth Front (in)	3½	3½	3½	3½	3½
Neck width (in)	7	8	8½	9½	10¼
Shoulder width (in)	5¾	6	6½	7	7¼
Total length (in)	22½	23¼	23¼	24	24
<b>Sleeve</b>					
Width at lower edge (in)	8	8½	9½	10¼	10¼
Width at top edge (in)	15½	16	17	17¾	17¾
Length to cap (in)	22	23	23	25	25
Total length (in)	43	44	44	46	46

# Design S9012 / Pullover with Seed Stitch Corners

Chart 1, left

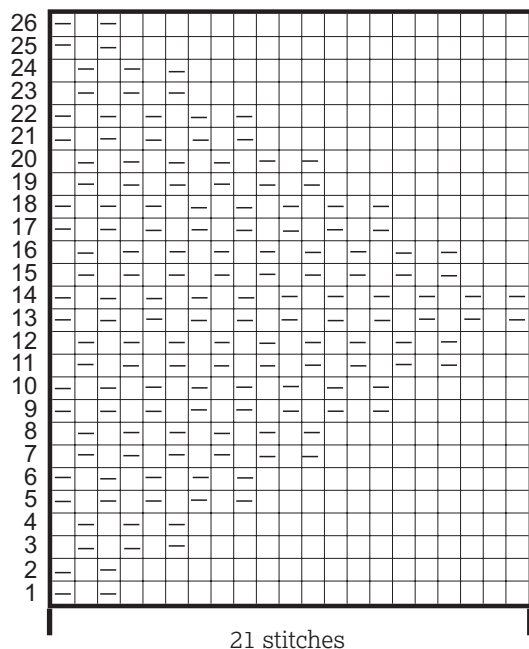


Chart 1, right

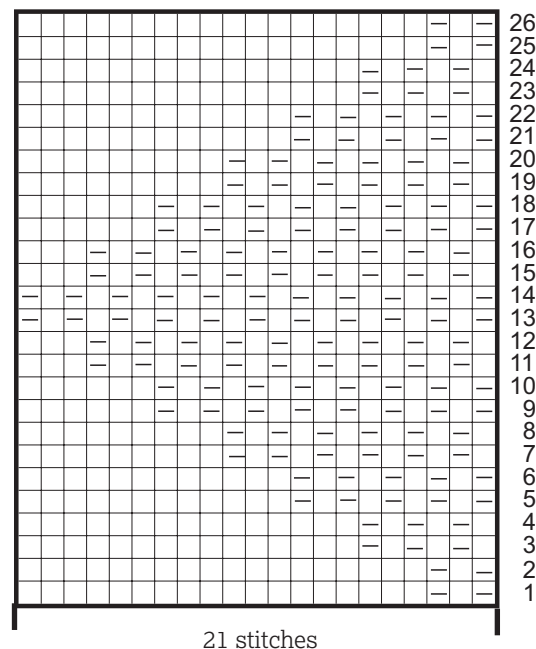
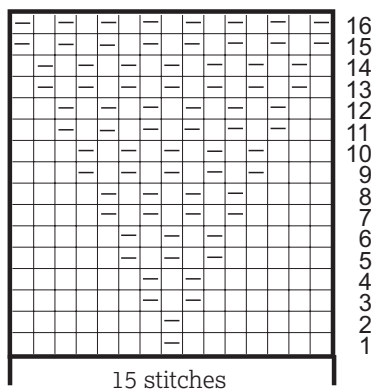


Chart 2



Stitch Key:

- = knit on RS, purl on WS  
 □ = purl on RS, knit on WS